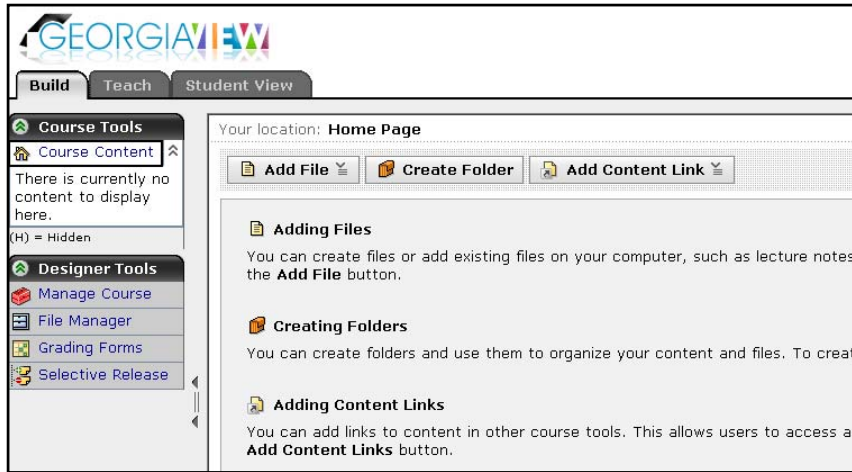


Adding Learning Modules

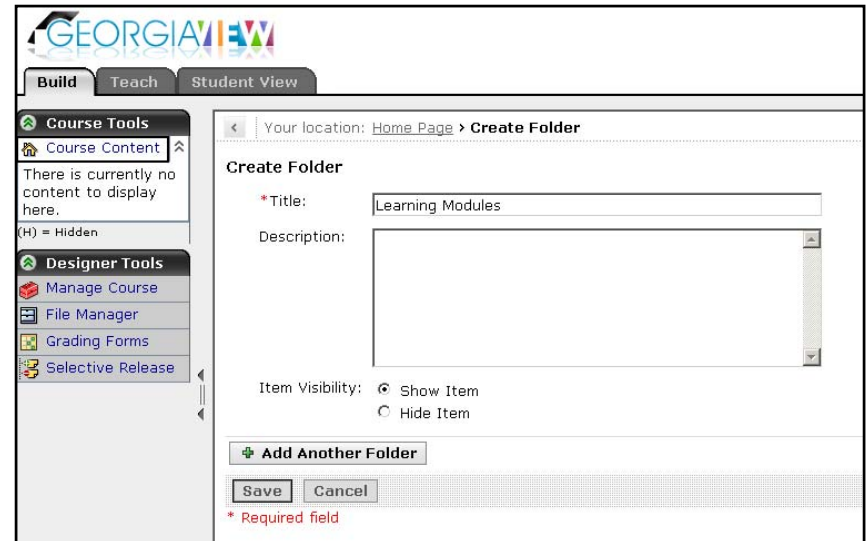
Center for Online Learning

Creating the Learning Modules Folder

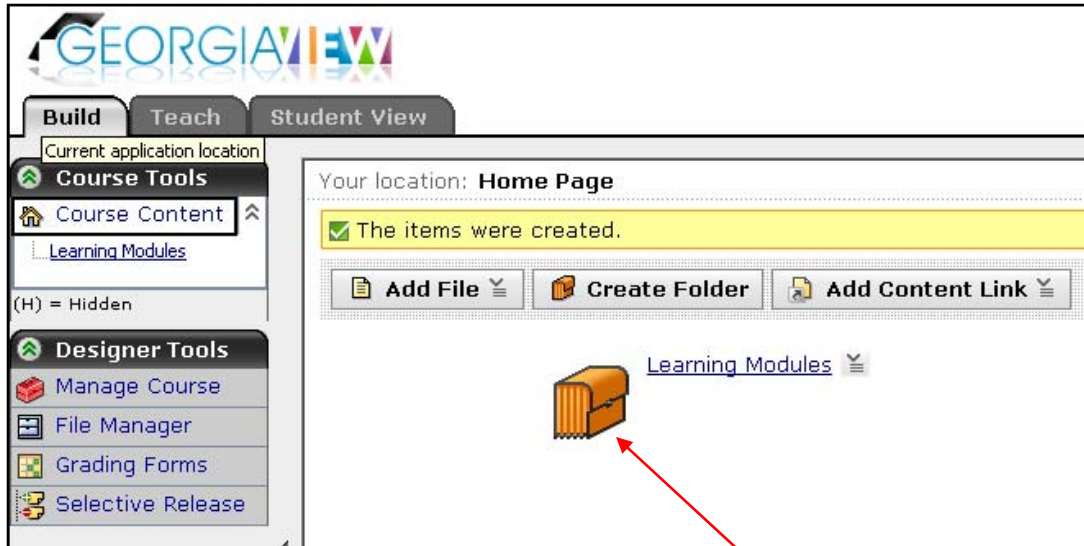
- Click on **Build** Tab
- Click on **Create Folder**



- For “Title” type Learning Modules
- Click **Save**

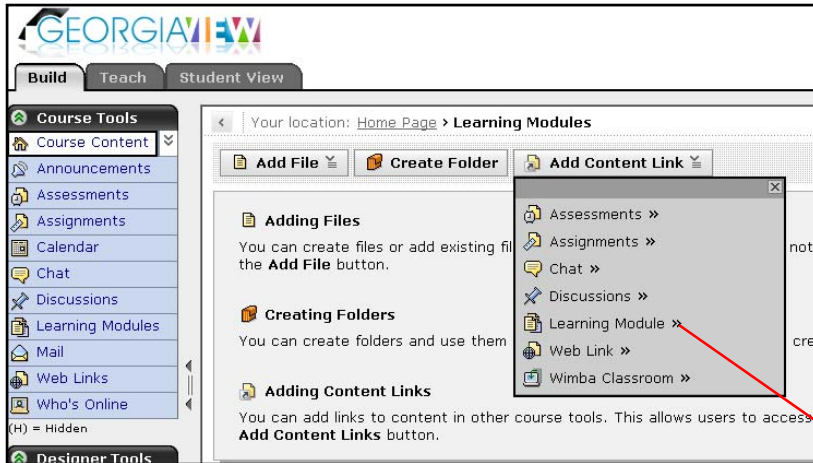


Creating a Learning Module



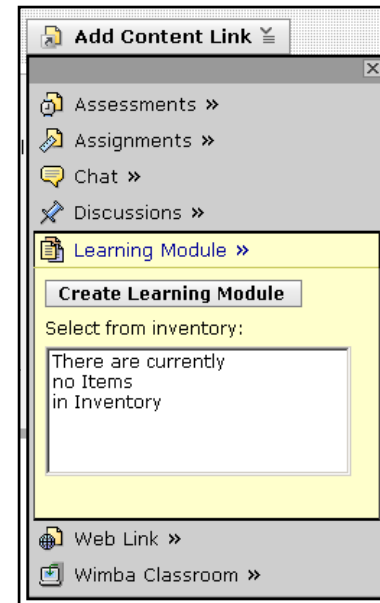
- Now that you have created the **Learning Modules** folder on the home page...
- Click on **Learning Modules** folder

Creating a Learning Module



- Click on **Add Content Link**
- Click on **Learning Module**

- Click on **Create Learning Module**



Creating a Learning Module

The screenshot shows the 'Create Learning Module' form in the GeorgiaVIEW system. The interface includes a top navigation bar with 'Build', 'Teach', and 'Student View' tabs. A left sidebar contains 'Course Tools' (Course Content, Announcements, Assessments, Assignments, Calendar, Chat, Discussions, Learning Modules, Mail, Web Links, Who's Online) and 'Designer Tools' (Manage Course, File Manager, Grading Forms, Selective Release). The main content area is titled 'Create Learning Module' and contains the following fields and options:

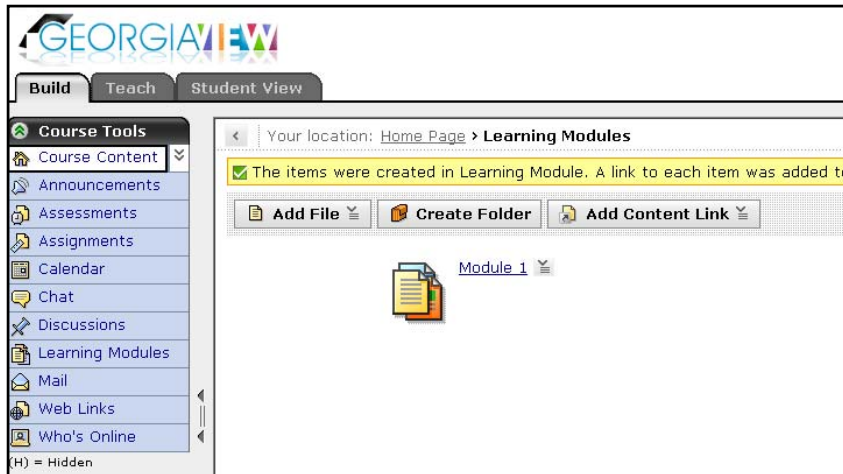
- Title:** A text input field containing 'Module 1'.
- Description:** A large text area for entering a description.
- Item Visibility:** Radio buttons for 'Show Item' (selected) and 'Hide Item'.
- Table of Contents:** A dropdown menu for 'Numbering' set to '1, 1.1, 1.1.1, 2...'. Below it are radio buttons for 'Display Table of Contents': 'On the left' (selected) and 'Do not display'.
- First page of the learning module should be:** Radio buttons for 'The Table of Contents' and 'The first page in the Table of Contents' (selected).

At the bottom, there are three buttons: 'Save', 'Cancel', and 'Save and Create Another'. A red asterisk and the text '* Required field' are located at the bottom left of the form.

- Type **Module 1** next to “Title”
- Click **Save**

Final Product

This is what the learning module looks like in the **Build** tab.



This is what the learning module looks like in the **Student View**.

